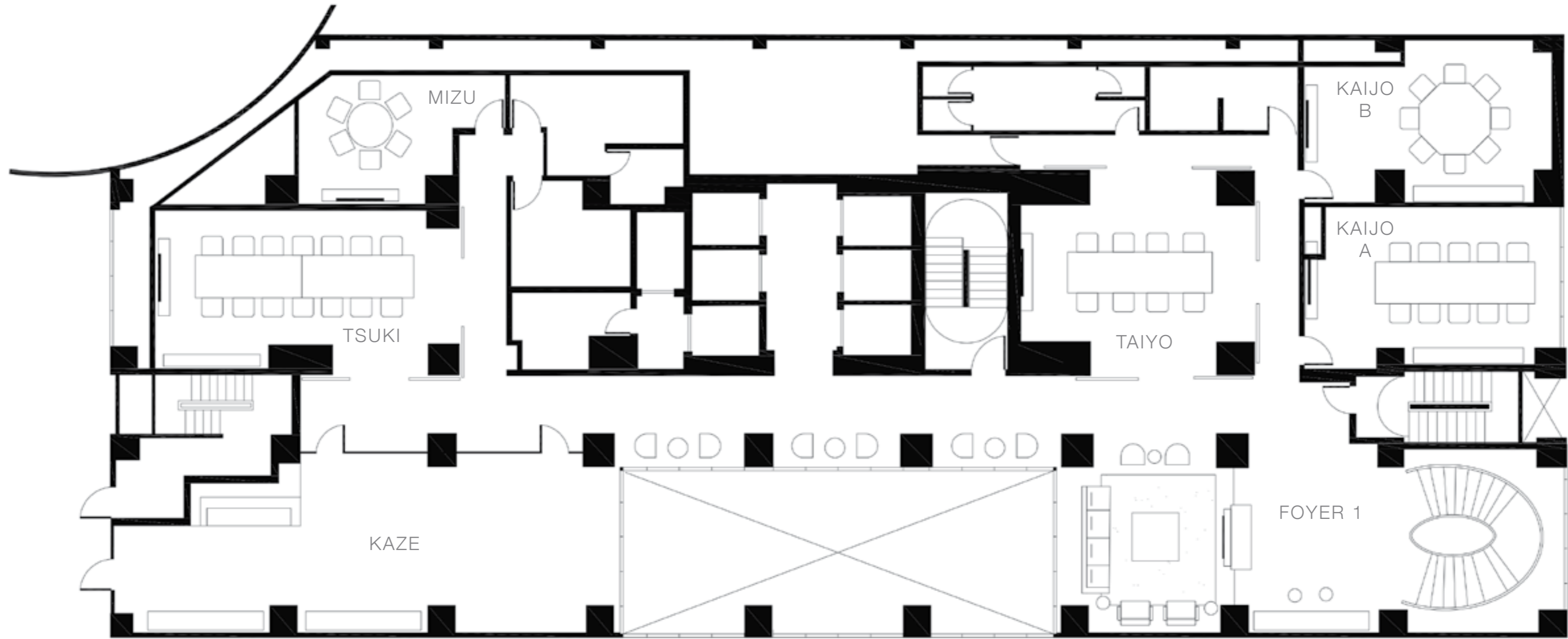


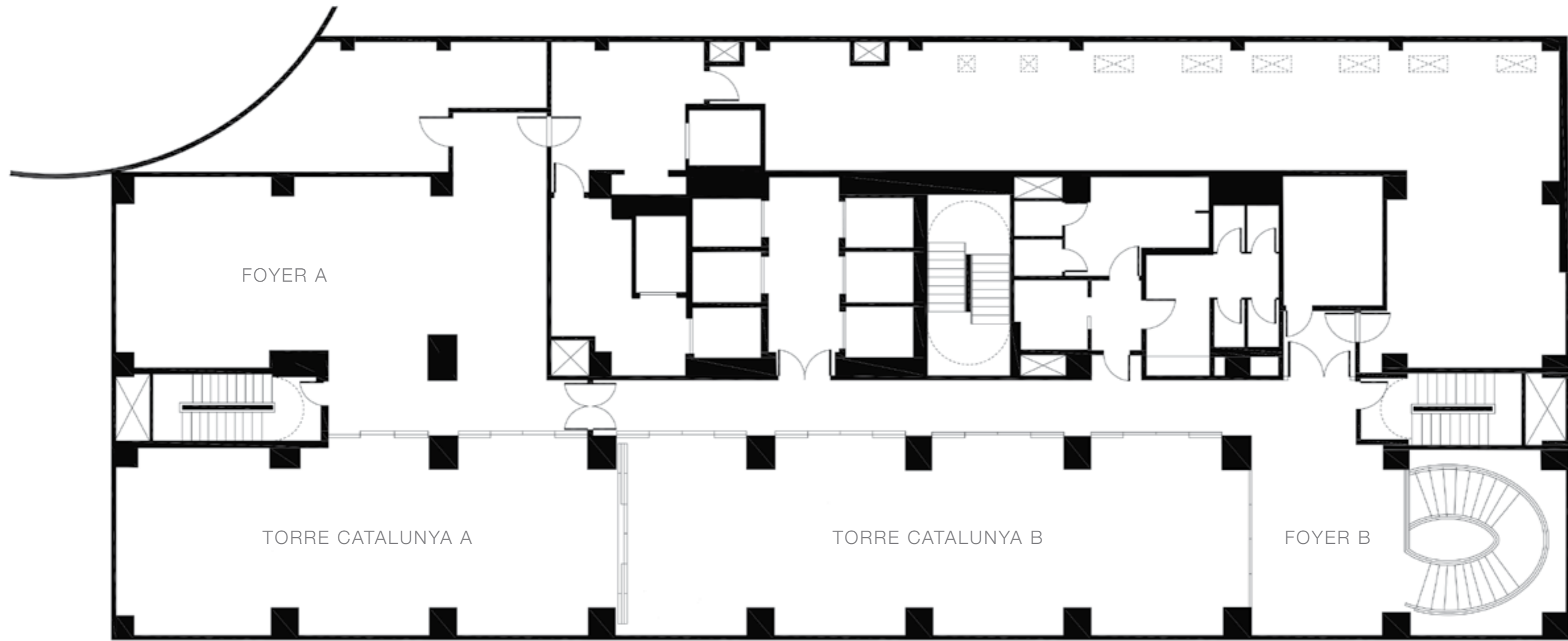
MEETING / EVENT SPACES

NOBU HOTEL
BARCELONA

Avenida de Roma, 2-4, 08014 Barcelona, Spain
inquiries-barcelona@nobuhotels.com
nobuhotels.com/barcelona



FIRST FLOORPLAN - NTS



SECOND FLOORPLAN - NTS

CAPACITY CHART

	MEETING ROOMS	SQM	SQF	CLASSROOM	BOARDROOM	CABARET	U-SHAPE	THEATER	RECEPTION	ROUND 6	ROUND 8	EXISTING	
GROUND FLOOR	NOBU SAKE BAR	140	1506	-	-	-	-	-	120	-	-	72	
	NOBU SAKE BAR INDOOR	100	1076	-	-	-	-	-	80	-	-	56	
	NOBU SAKE BAR TERRACE	40	430	-	-	-	-	-	40	-	-	16	
1 st FLOOR	MIZU	24	258	-	6	-	-	-	-	6	-	6	
	TSUKI	57	613	-	22	-	18	-	-	-	-	20	
	TAIYO	40	430	20	20	10	18	36	35	18	16	-	
	KAIJO A	40	430	24	22	12	18	30	35	12	16	-	
	KAIJO B	39	419	21	22	10	18	30	35	12	16	-	
	KAIJO A+B	79	850	36	25	25	22	40	75	36	32	-	
	KAZE	82	882	37	26	25	25	72	75	30	40	-	
	FOYER 1	70	753	-	-	-	-	-	70	-	-	-	
	2 nd FLOOR	TORRE CATALUNYA A	90	968	41	29	32	30	75	80	48	64	-
		TORRE CATALUNYA B	120	1291	54	38	45	54	100	110	66	88	-
TORRE CATALUNYA A+B		210	2260	95	67	80	84	174	200	102	136	-	
FOYER A		86	925	-	-	-	-	-	80	40	40	-	
FOYER B		30	322	-	-	-	-	-	28	-	-	-	
22 nd FLOOR	NOBU SUITE	150	1615	-	12	-	10	-	40	-	-	-	
23 rd FLOOR	MATSHUHISA'S PDR	54	581	-	30	30	28	-	50	30	40	24	
	NOBU RESTAURANT	300	3229	-	-	-	-	-	280	-	-	200	
	NOBU SAGRADA FAMILIA	56	602	-	30	-	-	-	60	-	-	24	